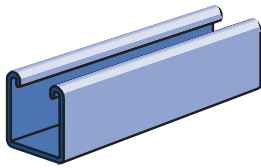


**P6000 SS**

Wt/100 Ft: 37 Lbs (55 kg/100m)

**MATERIAL****STAINLESS STEEL**

Channels: ASTM A 240 (Type 304)

Sintered nuts: ASTM B783 (Type 316N2-33)

Fittings:

ASTM A240 (Type 304) or ASTM A276 (Type 304)

Type 316 stainless also available for most products.

Contact factory for specific material availability.

ALUMINUM

Channels (Extruded): ASTM B221 (Type 6063-T6)

Fittings: ASTM B209 (Type 1100F or Type 5052-H32)

Nuts: ASTM B221 (Type 6063-T5)

Project: _____

Approval Stamp:

Architect / Engineer: _____

Date: _____ Phone: _____

Contractor: _____

Address: _____

Notes 1: _____

Notes 2: _____
