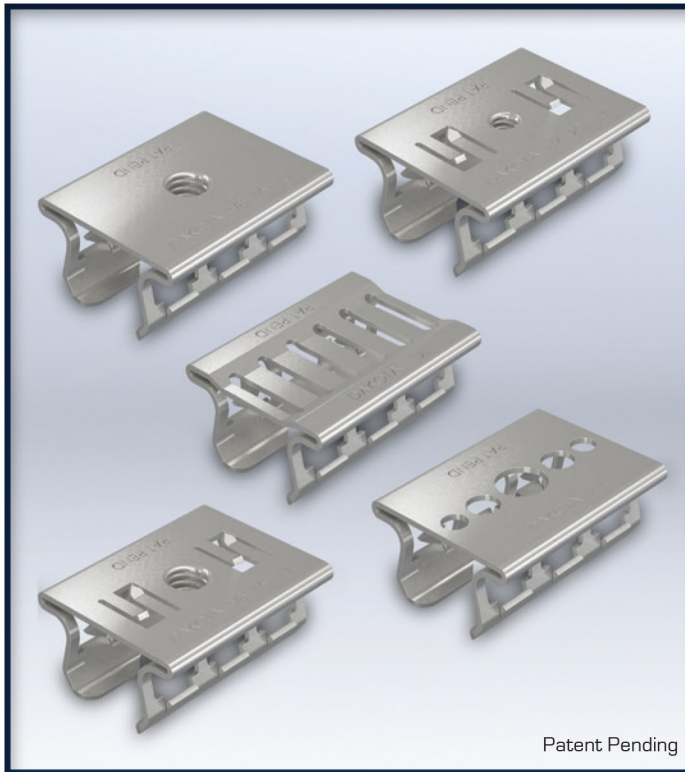


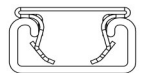
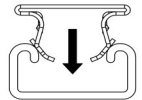
DAKOTA SMART-RECEIVERS™



Features & Benefits:

- **HUGE time savings!**
- Push, Click, Done
- Quickly installed into any 13/16" or 1-5/8" strut channel (see right)
- High strength yield
- No measuring required
- Moveable along strut channel
- Clean and organized appearance
- Fantastic for prefabrication
- Almost endless applications
- Patent Pending
- Made in the USA

Installation:



Specs

Material	SAE Austempered Spring Steel
Finish	Dakota ProTect Wet/Dry: 1000hr SST
Color	Grey
Size	1.488" (37.8mm) X 1.890" (48.0mm) X 0.825" (20.9mm)
Load	400 lbs. 3x Safety Factor

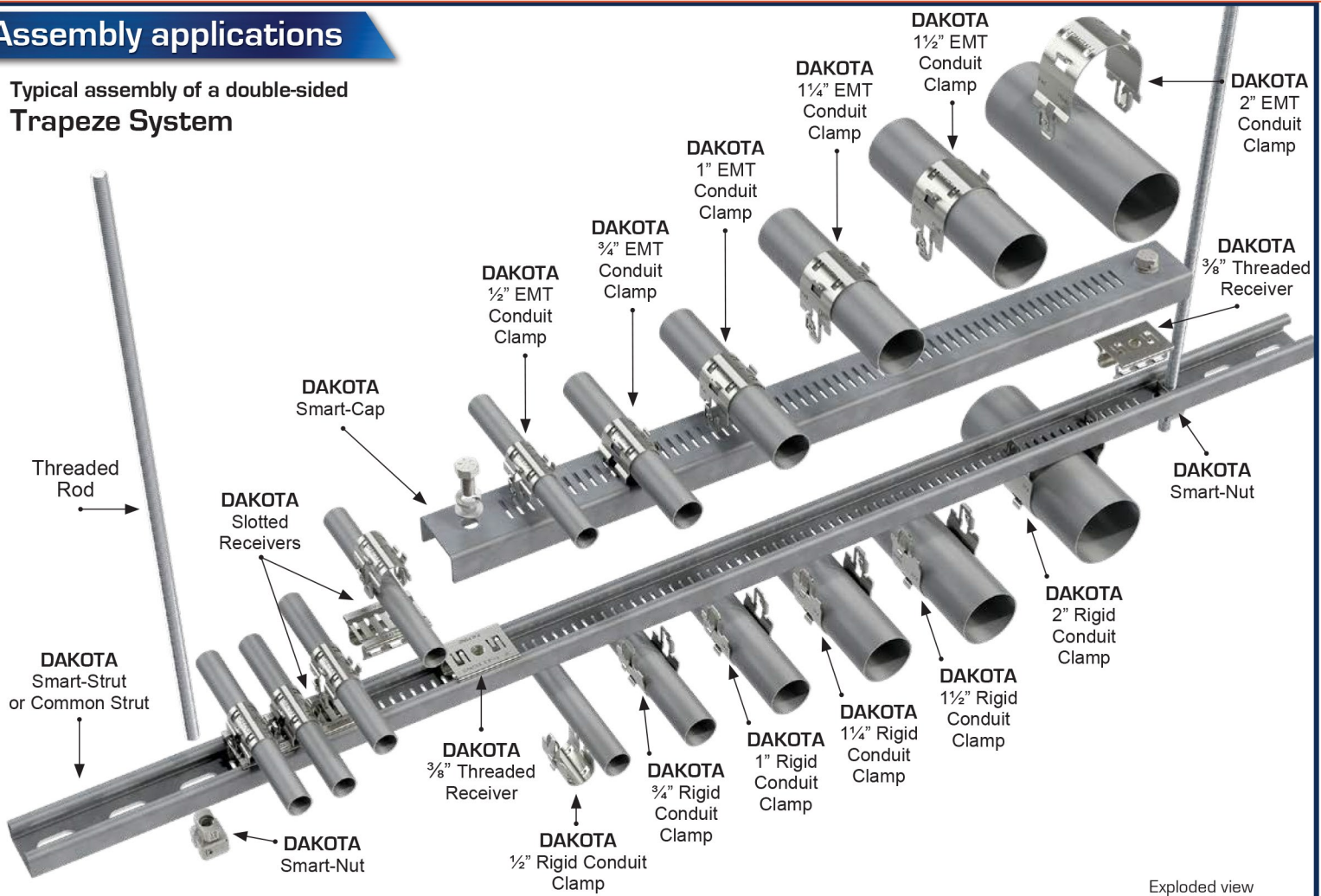
Dimensions

	Part #	Description	Details	Possible Applications
 PAT PENDING DAKOTA 1/4"-20	DS-TR14-BPT	1/4"-20 Dakota Threaded Receiver (w/ barbs)	Allows for 1/4" screw attachment to strut channel with stabilized rotation.	Perfect for mounting 1900 boxes, electrical panels, pull boxes, and disconnect boxes to strut channels.*
 PAT PENDING DAKOTA 3/8"-16	DS-TR38-BPT	3/8"-16 Dakota Threaded Receiver (w/ barbs)	Allows for 3/8" screw attachment to strut channel with stabilized rotation.	
 PAT PENDING DAKOTA 1/4"-20	DS-TR14-WPT	1/4"-20 Dakota Threaded Receiver (w/o barbs)	Allows for 1/4" screw attachment to strut channel.	Flat surface top for flush to surface mounting. Great for building strut frames, angle bracket mounts, strut joints, bridle rings, j-hooks and much more.*
 PAT PENDING DAKOTA 3/8"-16	DS-TR38-WPT	3/8"-16 Dakota Threaded Receiver (w/o barbs)	Allows for 3/8" screw attachment to strut channel.	
 PAT PENDING DAKOTA	DS-MR-PT	Dakota Mounting Receiver	Non-threaded for universal mounting. Universal Mounting Holes: 0.219"(5.5mm) x 0.281"(7.1mm) x 0.438"(11.1mm)	Quick installation of wall mounted strut channels.
 PAT PENDING DAKOTA	DS-SR-PT	Dakota Slotted Receiver	Use as one or grouped together with Dakota Smart-Clamps.	Great for quick back to back strut application.

* Note: Not to be used to support trapeze installation

Assembly applications

Typical assembly of a double-sided Trapeze System



Visit WWW.DAKOTASYSTEMSUSA.COM for

- "How To" Videos
- Time Savings Comparison Information
- Industry Specific Applications
- Product Specifications
- New & Upcoming Products

DAKOTA product line



DAKOTA
Clamps



DAKOTA
Smart-Strut™



DAKOTA
Smart-Caps™ & Receivers



DAKOTA
Smart-Nut™

DAKOTA  **SYSTEMS**

A division of **MAG DADDY**
MAGNETIC FASTENERS

UBS

Unistrut Buffalo Supports

128 Sycamore Street - Buffalo, NY 14204-1942

Toll-Free: (800) 285-3056 Tel: (716) 854-7633 Fax: (716) 854-1184

Web: unistrutstore.com

Email: sales@unistrutstore.com