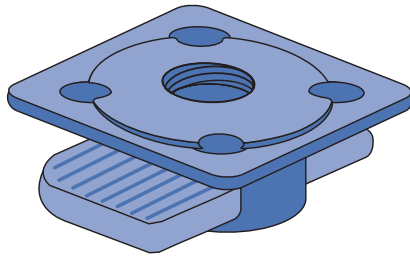
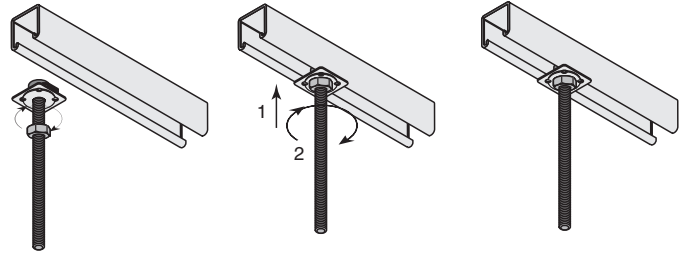




### KWIK WASHER™



Overhead installation with one hand.  
Available in zinc plated and hot dip galvanized



Part No.	Size In (mm)	Load Lbs (kN)	Wt/100 pcs Lbs (kg)
K1062	1/4" (6)	250 (1.1)	1.2 (0.5)
K1063	3/8" (10)	610 (2.7)	2.6 (1.2)
K1064	1/2" (13)	1,130 (5.0)	9.3 (4.2)

### MATERIAL

Unistrut channel nuts are manufactured from mild steel bars, and after machining operations are completed, they are case hardened, assuring positive biting action into the inturred edge of the Unistrut channel.

Bolt Size	Channel Nut ASTM
1/4" & 5/16"	A1011 SS GR45
3/8", 7/16" & 1/2"	A576 GR1015 Modified
5/8" & 3/4"	A36 or A675 GR60
7/8"	A36

### FINISHES

Nuts, bolts and washers are electro-galvanized (EG), ASTM B633 Type III SC1 finish, unless otherwise noted.

Many hardware items are also available in stainless steel. Consult factory for ordering information.

Project: \_\_\_\_\_

Architect / Engineer: \_\_\_\_\_

Date: \_\_\_\_\_ Phone: \_\_\_\_\_

Contractor: \_\_\_\_\_

Address: \_\_\_\_\_

Notes 1: \_\_\_\_\_

Notes 2: \_\_\_\_\_

Approval Stamp: